



Sink Phantom Base Gun Metal 30" x 18" (30mm thk)

Kitchen Sinks

Code: 5533 906

PVD Gun Metal
AISI 304 Stainless steel
Foster brushed



DETAILS

Series	Phantom Base
Coloring	Gun Metal
Finish	PVD
Material	AISI 304 stainless steel
Texture	Foster brushed
Dimensions	32 3/8" x 20 3/8"
Standard fittings	Drain Boxed packing
Built-in hole	View technical data sheet

Bowl dimension	30" x 18"
----------------	-----------

Number of bowls	1 bowl
-----------------	--------

Waste fitting	3,5" drain
---------------	------------

FEATURES

GUN METAL	The Gun Metal finish is obtained by treating steel with a physical process called PVD (Physical Vacuum Deposition) which deposits particles of noble metals on the surface. The result is a unique and refined aesthetic effect, and an improvement of the mechanical properties of the steel which is more resistant to impact and scratches.
-----------	--

PHANTOM BASE 30 mm	The Phantom BASE sink's bottoms are specifically engineered to be coupled with sinks made out of slabs. The perimetric trough makes for a simple and perfect installation. This version of Phantom BASE is meant for slabs of 30mm thickness.
--------------------	---

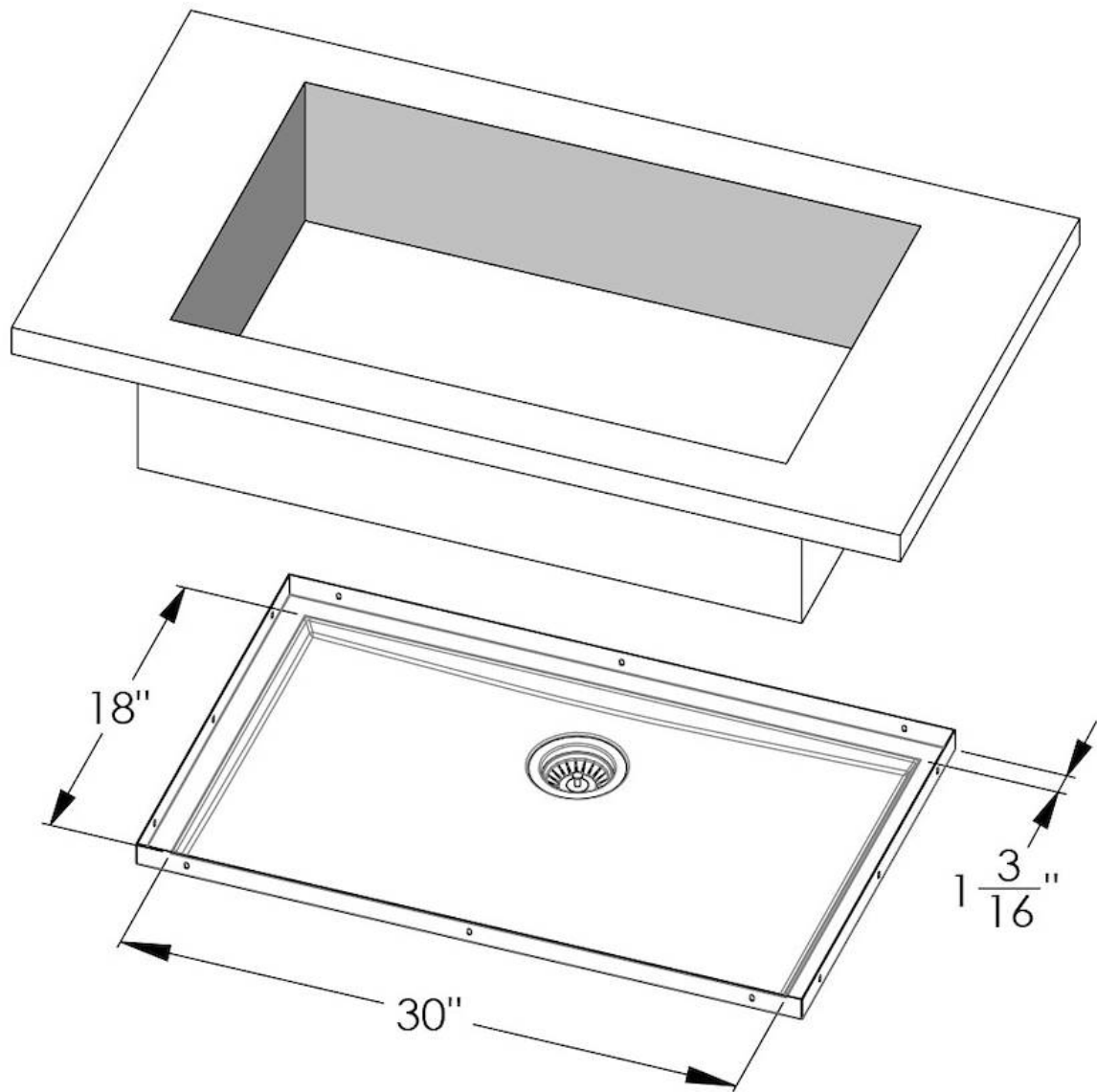
PHANTOM BASE WITHOUT WELDING	The steel bottom Phantom BASE solves the problem of water draining of slab sinks, because the slope built into the moulded bottom ensures perfect draining. The radius and sloped profile of Phantom BASE guarantee great practicality and hygiene in everyday cleaning.
------------------------------	--

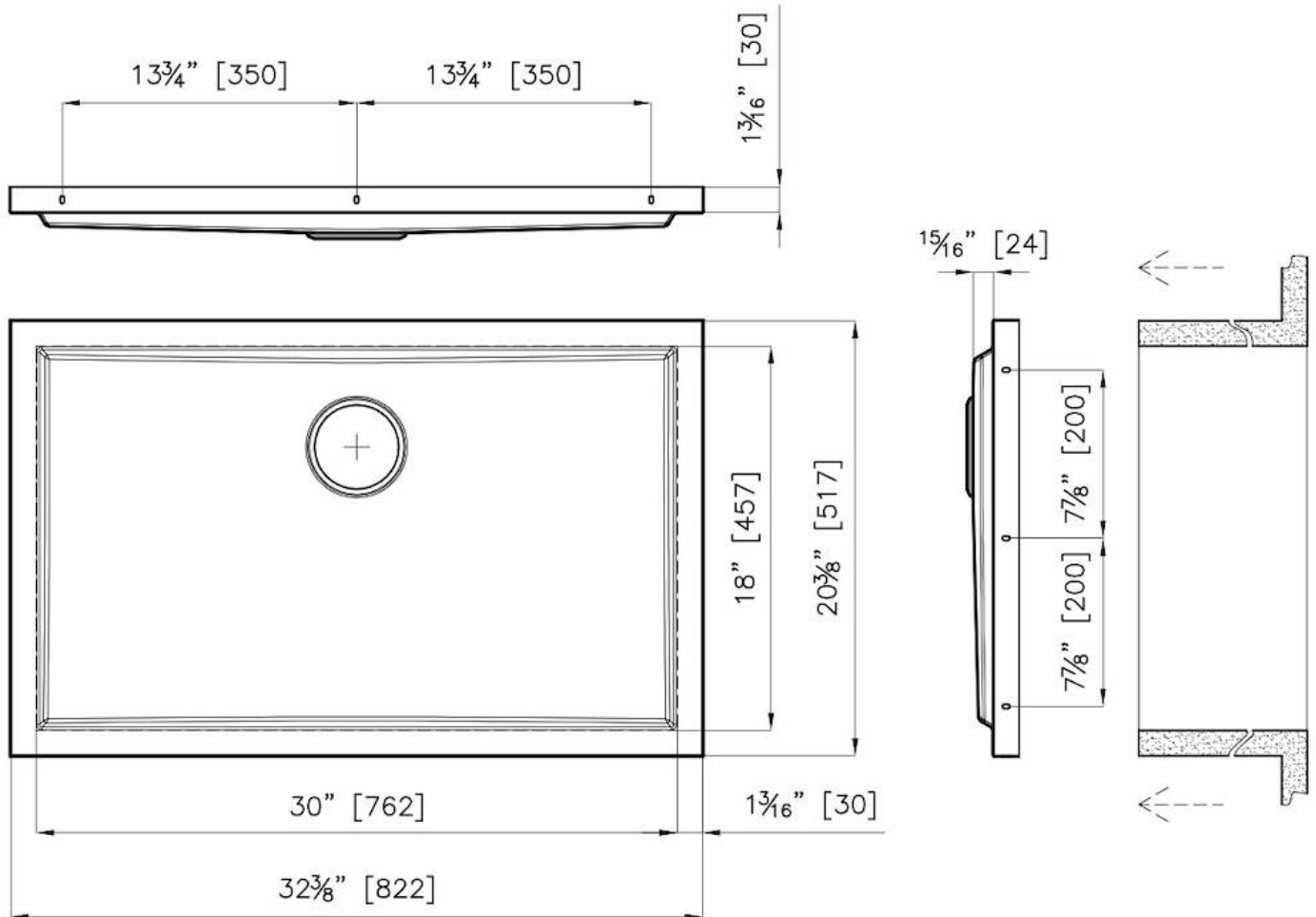
High thickness	1.5 mm thick steel. A significant thickness, which guarantees the maximum sturdiness and durability.
----------------	--

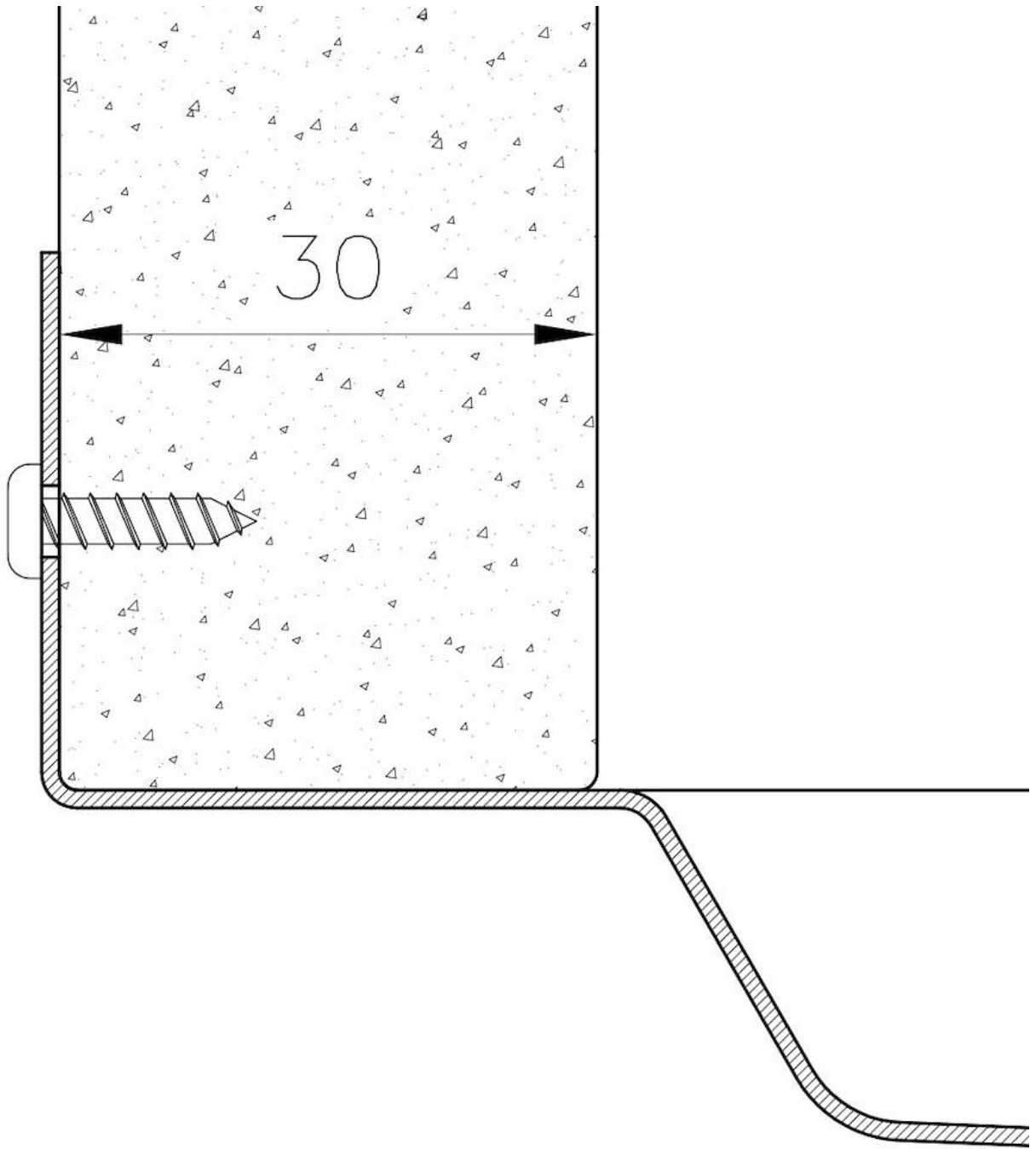
Small radius	Bowls with squared shapes with a modern design and an increased capacity, for a minimal aesthetics connected with an extreme practicality.
--------------	--

Basket 3,5" waste fitting	The drain is equipped with a large 3.5" drain, with the practical basket cap that prevents the discharge of solid parts.
---------------------------	--

TECHNICAL DATA







GALLERY



OPTIONAL ACCESSORIES



Black grid
8100 619



Chopping board (USA)
8644 034



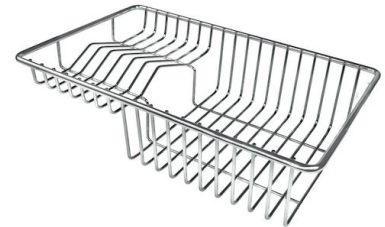
Stainless steel plate rack
8100 154
* only in combination with the accessory
8644 034



Stainless steel perforated pan
8154 000
* only in combination with the accessory
8644 034



Twin Chopping Board
8644 102



Stainless Steel dishes holder
8100 303
* only in combination with the accessory
8644 102



Stainless steel perforated pan
8151 000
* only in combination with the accessory
8644 102



Grating kit complete with ring support and food collection tray
8159 101
* only in combination with the accessory
8644 102



Waste disposer throat PVD Gun Metal
8669 046



**PVD Gun Metal automatic kit for
waste-fitting**

8407 136

RECOMMENDED PAIRINGS



Faucet Capri

8467 005



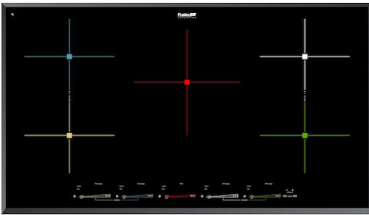
Faucet Salina

8487 005



Milano Cooktop 4 burners inLine

7640 900



Milano Induction Cooktop 5 Plate

7390 945